

4-BEDROOM HOME EASTSIDE



Our 4-Bedroom Home Eastside is decorated and equipped with all your vacation needs. This 4-bedroom home sleeps up to 8 people and is 2,300 sq. ft. minimum. Eastside homes are tucked away in a quiet corner of the resort with access to a children's playground, basketball courts and other amenities. A resort fee of \$40.00** per night applies.

KEY FEATURES:

- 4 Bedrooms
- 3 or 4 Bathrooms *(welcome amenities included)*
- Number of Floors: 1 or 2
- Oversized Dining Area
- Fully Equipped Kitchen *(Microwave, Coffee/Tea Maker, Oven, Stove, Fridge, Toaster, Dishwasher, Cups/Glassware, Cookware, Cutlery, Kitchen welcome supplies)*
- Grill
- Private Pool
- Washer/Dryer
- TV in every bedroom
- Telephone *(with Unlimited Local and Toll-Free Phone Calls)*
- Wireless Internet Connection
- Iron & Iron Board
- Private Safe
- Hairdryer
- Alarm Clock
- Air Conditioning
- Smoke Detectors / Non-smoking
- Pets allowed* *(restrictions apply)*
- Daily Housekeeping Service*
- Private Garage / Driveway Parking
- Full Cleaning Service*
- Equipment Rentals* *(twin rollaway bed, pack n' play, propane tank, etc)*

*Additional fees apply



Home photos may not match the exact accommodation you receive upon check-in. Room/bed type depends on availability at check-in.

**Subject to change without prior notice.

4-BEDROOM HOME WESTSIDE



Our 4-Bedroom Home Westside is decorated and equipped with all your vacation needs. This 4-bedroom home sleeps up to 8 people and is 2,300 sq. ft. minimum. Westside homes are located near our premier resort amenities, including clubhouse, restaurants and tennis, basketball, and volleyball courts. A resort fee of \$40.00** per night applies.

KEY FEATURES:

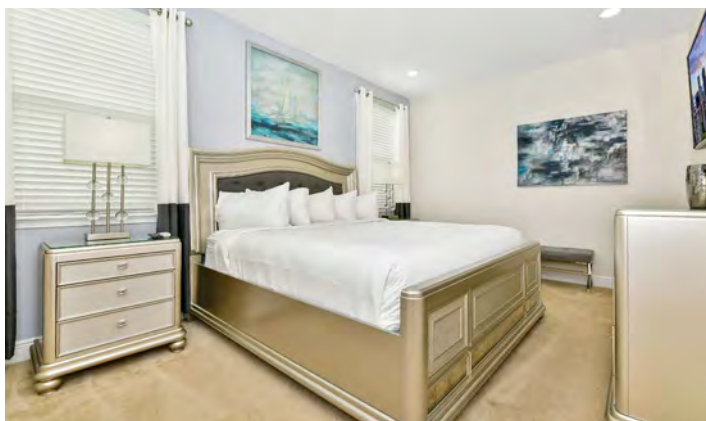
- 4 Bedrooms
- 3 or 4 Bathrooms *(welcome amenities included)*
- Number of Floors: 2
- Oversized Dining Area
- Lounge with Sleeper Sofa
- Fully Equipped Kitchen *(Microwave, Coffee/Tea Maker, Oven, Stove, Fridge, Toaster, Dishwasher, Cups/Glassware, Cookware, Cutlery, Kitchen welcome supplies)*
- Grill
- Private Pool
- Washer/Dryer
- TV in every bedroom
- Telephone *(with Unlimited Local and Toll-Free Phone Calls)*
- Wireless Internet Connection
- Iron & Iron Board
- Private Safe
- Hairdryer
- Alarm Clock
- Air Conditioning
- Smoke Detectors / Non-smoking
- Pets allowed* *(restrictions apply)*
- Daily Housekeeping Service*
- Private Garage / Driveway Parking
- Full Cleaning Service*
- Equipment Rentals* *(twin rollaway bed, pack n' play, propane tank, etc)*

**Additional fees apply*



4-Bedroom Home **ELITE** Westside

- Home theaters and/or game rooms
- Larger pools and backyards



Home photos may not match the exact accommodation you receive upon check-in. Room/bed type depends on availability at check-in.

****Subject to change without prior notice.**



5-BEDROOM HOME EASTSIDE

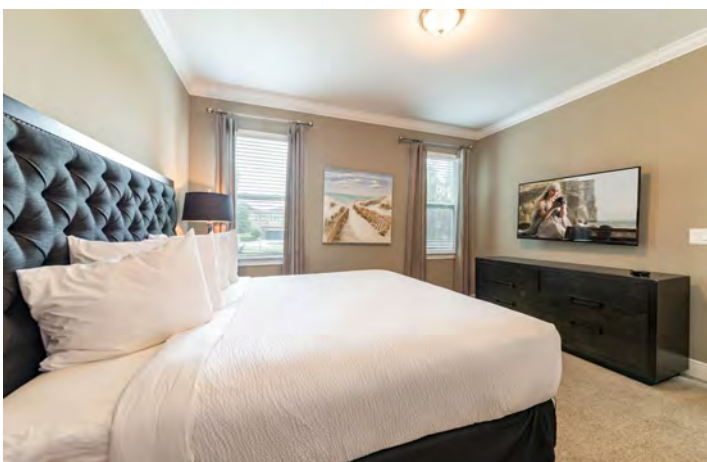


Our 5-Bedroom Home Eastside is decorated and equipped with all your vacation needs. This 5-bedroom home sleeps up to 10 people and is 2,500 sq. ft. minimum. Eastside homes are tucked away in a quiet corner of the resort with access to a children's playground, basketball court, and other amenities. A resort fee of \$40.00** per night applies.

KEY FEATURES:

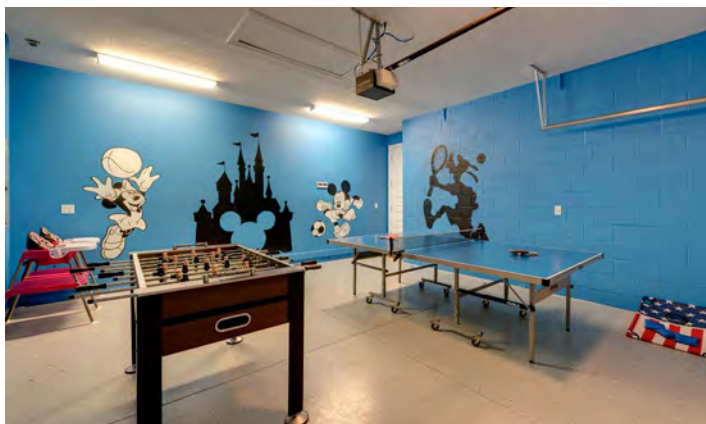
- 5 Bedrooms
- 4 or 5 Bathrooms *(welcome amenities included)*
- Number of Floors: 2
- Oversized Dining Area
- Lounge with Sleeper Sofa
- Fully Equipped Kitchen *(Microwave, Coffee/Tea Maker, Oven, Stove, Fridge, Toaster, Dishwasher, Cups/Glassware, Cookware, Cutlery, Kitchen welcome supplies)*
- Grill
- Private Pool
- Washer/Dryer
- TV in every bedroom
- Telephone *(with Unlimited Local and Toll-Free Phone Calls)*
- Wireless Internet Connection
- Iron & Iron Board
- Private Safe
- Hairdryer
- Alarm Clock
- Air Conditioning
- Smoke Detectors / Non-smoking
- Pets allowed* *(restrictions apply)*
- Daily House keeping Service*
- Private Garage / Driveway Parking
- Full Cleaning Service*
- Equipment Rentals* *(twin rollaway bed, pack n' play, propane tank, etc)*

**Additional fees apply*



5-Bedroom Home **ELITE** Eastside

- Home theaters and/or game rooms
- Larger pools and backyards



Home photos may not match the exact accommodation you receive upon check-in. Room/bed type depends on availability at check-in.

****Subject to change without prior notice.**

5-BEDROOM HOME WESTSIDE



Our 5-Bedroom Home Westside is decorated and equipped with all your vacation needs. This five-bedroom home sleeps up to 10 people and is 2,300 sq. ft. minimum. Westside homes are located near our premier resort amenities, including clubhouse, restaurants and tennis, basketball, and volleyball courts. A resort fee of \$40.00** per night applies.

KEY FEATURES:

- 5 Bedrooms
- 4 or 5 Bathrooms *(welcome amenities included)*
- Number of Floors: 2
- Oversized Dining Area
- Lounge with Sleeper Sofa
- Fully Equipped Kitchen *(Microwave, Coffee/Tea Maker, Oven, Stove, Fridge, Toaster, Dishwasher, Cups/Glassware, Cookware, Cutlery, Kitchen welcome supplies)*
- Grill
- Private Pool
- Washer/Dryer
- TV in every bedroom
- Telephone *(with Unlimited Local and Toll-Free Phone Calls)*
- Wireless Internet Connection
- Iron & Iron Board
- Private Safe
- Hairdryer
- Alarm Clock
- Air Conditioning
- Smoke Detectors / Non-smoking
- Pets allowed* *(restrictions apply)*
- Daily Housekeeping Service*
- Private Garage / Driveway Parking
- Full Cleaning Service*
- Equipment Rentals* *(twin rollaway bed, pack n' play, propane tank, etc)*

**Additional fees apply*



5-Bedroom Home **ELITE** Westside

- Home theaters and/or game rooms
- Larger pools and backyards



Home photos may not match the exact accommodation you receive upon check-in. Room/bed type depends on availability at check-in.

****Subject to change without prior notice.**

5-BEDROOM HOME NEAR WATER PARK



Our 5-Bedroom Home Near Water Park is decorated and equipped with all your vacation needs. This 5-bedroom home sleeps up to 10 people and is 2,500 sq. ft. minimum. These homes near the water park are located close to our premier resort amenities, including clubhouse, restaurants and tennis, basketball, and volleyball courts. A resort fee of \$40.00** per night applies.

KEY FEATURES:

- 5 Bedrooms
- 4 Bathrooms *(welcome amenities included)*
- Number of Floors: 2
- Oversized Dining Area
- Lounge with Sleeper Sofa
- Fully Equipped Kitchen *(Microwave, Coffee/Tea Maker, Oven, Stove, Fridge, Toaster, Dishwasher, Cups/Glassware, Cookware, Cutlery, Kitchen welcome supplies)*
- Grill
- Private Pool
- Washer/Dryer
- TV in every bedroom
- Telephone *(with Unlimited Local and Toll-Free Phone Calls)*
- Wireless Internet Connection
- Iron & Iron Board
- Private Safe
- Hairdryer
- Alarm Clock
- Air Conditioning
- Smoke Detectors / Non-smoking
- Pets allowed* *(restrictions apply)*
- Daily Housekeeping Service*
- Private Garage / Driveway Parking
- Full Cleaning Service*
- Equipment Rentals* *(twin rollaway bed, pack n' play, propane tank, etc)*

*Additional fees apply



Additional Features:

- Walking distance from Encore Resort Clubhouse and Water Park



Home photos may not match the exact accommodation you receive upon check-in. Room/bed type depends on availability at check-in.

**Subject to change without prior notice.

6-BEDROOM HOME EASTSIDE



Our 6-Bedroom Home Eastside is decorated and equipped with all your vacation needs. This 6-bedroom home sleeps up to 12 people and is 2,800 sq. ft. minimum. Eastside homes are tucked away in a quiet corner of the resort with access to a children's playground, basketball courts and other amenities. A resort fee of \$40.00** per night applies.

KEY FEATURES:

- 6 Bedrooms
- 6 Bathrooms *(welcome amenities included)*
- Number of Floors: 2
- Oversized Dining Area
- Lounge with Sleeper Sofa
- Fully Equipped Kitchen *(Microwave, Coffee/Tea Maker, Oven, Stove, Fridge, Toaster, Dishwasher, Cups/Glassware, Cookware, Cutlery, Kitchen welcome supplies)*
- Grill
- Private Pool
- Washer/Dryer
- TV in every bedroom
- Telephone *(with Unlimited Local and Toll-Free Phone Calls)*
- Wireless Internet Connection
- Iron & Iron Board
- Private Safe
- Hairdryer
- Alarm Clock
- Air Conditioning
- Smoke Detectors / Non-smoking
- Pets allowed* *(restrictions apply)*
- Daily Housekeeping Service*
- Private Garage / Driveway Parking
- Full Cleaning Service*
- Equipment Rentals* *(twin rollaway bed, pack n' play, propane tank, etc)*

**Additional fees apply*



Home photos may not match the exact accommodation you receive upon check-in. Room/bed type depends on availability at check-in.

****Subject to change without prior notice.**

6-BEDROOM HOME WESTSIDE



Our 6-Bedroom Home Westside is decorated and equipped with all your vacation needs. This 6-bedroom home sleeps up to 12 people and is 2,800 sq. ft. minimum. Westside homes are located near our premier resort amenities, including clubhouse, restaurants and tennis, basketball, and volleyball courts. A resort fee of \$40.00** per night applies.

KEY FEATURES:

- 6 Bedrooms
- 5 or 6 Bathrooms *(welcome amenities included)*
- Number of Floors: 2
- Oversized Dining Area
- Lounge with Sleeper Sofa
- Fully Equipped Kitchen *(Microwave, Coffee/Tea Maker, Oven, Stove, Fridge, Toaster, Dishwasher, Cups/Glassware, Cookware, Cutlery, Kitchen welcome supplies)*
- Grill
- Private Pool
- Washer/Dryer
- TV in every bedroom
- Telephone *(with Unlimited Local and Toll-Free Phone Calls)*
- Wireless Internet Connection
- Iron & Iron Board
- Private Safe
- Hairdryer
- Alarm Clock
- Air Conditioning
- Smoke Detectors / Non-smoking
- Pets allowed* *(restrictions apply)*
- Daily Housekeeping Service*
- Private Garage / Driveway Parking
- Full Cleaning Service*
- Equipment Rentals* *(twin rollaway bed, pack n' play, propane tank, etc)*

**Additional fees apply*

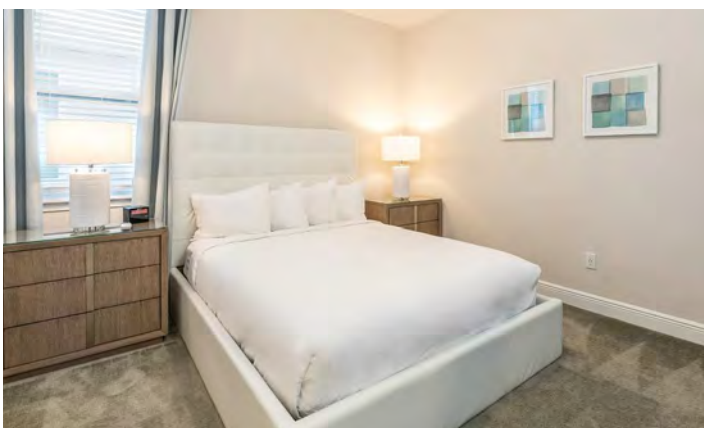


Home photos may not match the exact accommodation you receive upon check-in. Room/bed type depends on availability at check-in.

****Subject to change without prior notice.**

6-Bedroom Home **ELITE** Westside

- Home theaters and/or game rooms
- Larger pools and backyards



7-BEDROOM HOME EASTSIDE



Our 7-Bedroom Home Eastside is decorated and equipped with all your vacation needs. This 7-bedroom home sleeps up to 14 people and is 3,400 sq. ft. minimum. Eastside homes are tucked away in a quiet corner of the resort with access to a children's playground, basketball courts and other amenities. A resort fee of \$40.00** per night applies.

KEY FEATURES:

- 7 Bedrooms
- 6 Bathrooms *(welcome amenities included)*
- Number of Floors: 2
- Oversized Dining Area
- Lounge with Sleeper Sofa
- Fully Equipped Kitchen *(Microwave, Coffee/Tea Maker, Oven, Stove, Fridge, Toaster, Dishwasher, Cups/Glassware, Cookware, Cutlery, Kitchen welcome supplies)*
- Grill
- Private Pool
- Washer/Dryer
- TV in every bedroom
- Telephone *(with Unlimited Local and Toll-Free Phone Calls)*
- Wireless Internet Connection
- Iron & Iron Board
- Private Safe
- Hairdryer
- Alarm Clock
- Air Conditioning
- Smoke Detectors / Non-smoking
- Pets allowed* *(restrictions apply)*
- Daily Housekeeping Service*
- Private Garage / Driveway Parking
- Full Cleaning Service*
- Equipment Rentals* *(twin rollaway bed, pack n' play, propane tank, etc)*

**Additional fees apply*



Home photos may not match the exact accommodation you receive upon check-in. Room/bed type depends on availability at check-in.

****Subject to change without prior notice.**

7-BEDROOM HOME WESTSIDE

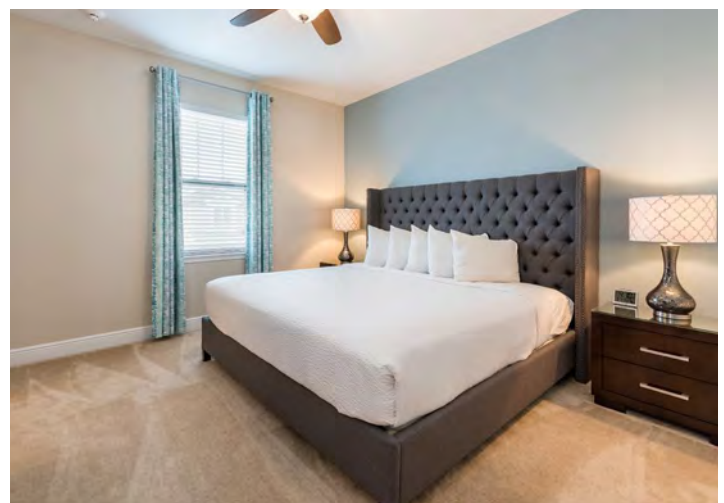


Our 7-Bedroom Home Westside is decorated and equipped with all your vacation needs. This 7-bedroom home sleeps up to 14 people and is 3,400 sq. ft. minimum. Westside homes near our premier resort amenities, including clubhouse, restaurants and tennis, basketball, and volleyball courts. A resort fee of \$40.00** per night applies.

KEY FEATURES:

- 7 Bedrooms
- 5, 6 or 7 Bathrooms (welcome amenities included)
- Number of Floors: 2
- Oversized Dining Area
- Lounge with Sleeper Sofa
- Fully Equipped Kitchen (Microwave, Coffee/Tea Maker, Oven, Stove, Fridge, Toaster, Dishwasher, Cups/Glassware, Cookware, Cutlery, Kitchen welcome supplies)
- Grill
- Private Pool
- Washer/Dryer
- TV in every bedroom
- Telephone (with Unlimited Local and Toll-Free Phone Calls)
- Wireless Internet Connection
- Iron & Iron Board
- Private Safe
- Hairdryer
- Alarm Clock
- Air Conditioning
- Smoke Detectors / Non-smoking
- Pets allowed* (restrictions apply)
- Daily Housekeeping Service*
- Private Garage / Driveway Parking
- Full Cleaning Service*
- Equipment Rentals* (twin rollaway bed, pack n' play, propane tank, etc)

*Additional fees apply



Home photos may not match the exact accommodation you receive upon check-in. Room/bed type depends on availability at check-in.

**Subject to change without prior notice.

8-BEDROOM HOME EASTSIDE



Our 8-Bedroom Home Eastside is decorated and equipped with all your vacation needs. This 8-bedroom home sleeps up to 16 people and is 3,400 sq. ft. minimum. Eastside homes are tucked away in a quiet corner of the resort with access to a children's playground, basketball courts and other amenities. A resort fee of \$40.00** per night applies.

KEY FEATURES:

- 8 Bedrooms
 - 7 Bathrooms *(welcome amenities included)*
 - Number of Floors: 2
 - Oversized Dining Area
 - Lounge with Sleeper Sofa
 - Fully Equipped Kitchen *(Microwave, Coffee/Tea Maker, Oven, Stove, Fridge, Toaster, Dishwasher, Cups/Glassware, Cookware, Cutlery, Kitchen welcome supplies)*
 - Grill
 - Private Pool
 - Washer/Dryer
 - TV in every bedroom
 - Telephone *(with Unlimited Local and Toll-Free Phone Calls)*
 - Wireless Internet Connection
 - Iron & Iron Board
 - Private Safe
 - Hairdryer
 - Alarm Clock
 - Air Conditioning
 - Smoke Detectors / Non-smoking
 - Pets allowed* *(restrictions apply)*
 - Daily Housekeeping Service*
 - Private Garage / Driveway Parking
 - Full Cleaning Service*
 - Equipment Rentals* *(twin rollaway bed, pack n' play, propane tank, etc)*
- *Additional fees apply



Home photos may not match the exact accommodation you receive upon check-in. Room/bed type depends on availability at check-in.

**Subject to change without prior notice.

8-BEDROOM HOME WESTSIDE



Our 8-Bedroom Home Westside is decorated and equipped with all your vacation needs. This 8-bedroom home sleeps up to 16 people and is 3400 sq. ft. minimum. Westside homes are located near our premier resort amenities, including clubhouse, restaurants and tennis, basketball, and volleyball courts. A resort fee of \$40.00** per night applies.

KEY FEATURES:

- 8 Bedrooms
 - 5, 6, 7 or 8 Bathrooms (welcome amenities included)
 - Number of Floors: 2
 - Oversized Dining Area
 - Lounge with Sleeper Sofa
 - Fully Equipped Kitchen (Microwave, Coffee/Tea Maker, Oven, Stove, Fridge, Toaster, Dishwasher, Cups/Glassware, Cookware, Cutlery, Kitchen welcome supplies)
 - Grill
 - Private Pool
 - Washer/Dryer
 - TV in every bedroom
 - Telephone (with Unlimited Local and Toll-Free Phone Calls)
 - Wireless Internet Connection
 - Iron & Iron Board
 - Private Safe
 - Hairdryer
 - Alarm Clock
 - Air Conditioning
 - Smoke Detectors / Non-smoking
 - Pets allowed* (restrictions apply)
 - Daily Housekeeping Service*
 - Private Garage / Driveway Parking
 - Full Cleaning Service*
 - Equipment Rentals* (twin rollaway bed, pack n' play, propane tank, etc)
- *Additional fees apply



Home photos may not match the exact accommodation you receive upon check-in. Room/bed type depends on availability at check-in.

**Subject to change without prior notice.

8-Bedroom Home **ELITE** Westside

- Home theaters and/or game rooms
- Larger pools and backyards



8-BEDROOM HOME ELITE WESTSIDE NEAR WATER PARK



Our 8-Bedroom Home Elite Westside Near Water Park is decorated and equipped with all your vacation needs. This 8-bedroom home sleeps up to 16 people and is 3,400 sq. ft. minimum. Westside homes near the water park are located close to our premier resort amenities, including clubhouse, restaurants and tennis, basketball, and volleyball courts. A resort fee of \$40.00** per night applies.

KEY FEATURES:

- 8 Bedrooms
- 5 or 6 Bathrooms *(welcome amenities included)*
- Number of Floors: 2
- Oversized Dining Area
- Lounge with Sleeper Sofa
- Fully Equipped Kitchen *(Microwave, Coffee/Tea Maker, Oven, Stove, Fridge, Toaster, Dishwasher, Cups/Glassware, Cookware, Cutlery, Kitchen welcome supplies)*
- Grill
- Private Pool
- Washer/Dryer
- TV in every bedroom
- Telephone *(with Unlimited Local and Toll-Free Phone Calls)*
- Wireless Internet Connection
- Iron & Iron Board
- Private Safe
- Hairdryer
- Alarm Clock
- Air Conditioning
- Smoke Detectors / Non-smoking
- Pets allowed* *(restrictions apply)*
- Daily Housekeeping Service*
- Private Garage / Driveway Parking
- Full Cleaning Service*
- Equipment Rentals* *(twin rollaway bed, pack n' play, propane tank, etc)*

**Additional fees apply*

Additional Features:

- Home theaters and/or game rooms
- Larger pools and backyards
- Walking distance from Encore Resort Clubhouse and Water Park



Home photos may not match the exact accommodation you receive upon check-in. Room/bed type depends on availability at check-in.

****Subject to change without prior notice.**

9-BEDROOM HOME WESTSIDE



Our 9-Bedroom Home Westside is decorated and equipped with all your vacation needs. This 9-bedroom home sleeps up to 18 people and is 4,600 sq. ft. minimum. Westside homes located near our premier resort amenities, including clubhouse, restaurants and tennis, basketball, and volleyball courts. A resort fee of \$40.00** per night applies.

KEY FEATURES:

- 9 Bedrooms
- 9 Bathrooms *(welcome amenities included)*
- Number of Floors: 2
- Oversized Dining Area
- Lounge with Sleeper Sofa
- Fully Equipped Kitchen *(Microwave, Coffee/Tea Maker, Oven, Stove, Fridge, Toaster, Dishwasher, Cups/Glassware, Cookware, Cutlery, Kitchen welcome supplies)*
- Grill
- Private Pool
- Washer/Dryer
- TV in every bedroom
- Telephone *(with Unlimited Local and Toll-Free Phone Calls)*
- Wireless Internet Connection
- Iron & Iron Board
- Private Safe
- Hairdryer
- Alarm Clock
- Air Conditioning
- Smoke Detectors / Non-smoking
- Pets allowed* *(restrictions apply)*
- Daily Housekeeping Service*
- Private Garage / Driveway Parking
- Full Cleaning Service*
- Equipment Rentals* *(twin rollaway bed, pack n' play, propane tank, etc)*

**Additional fees apply*

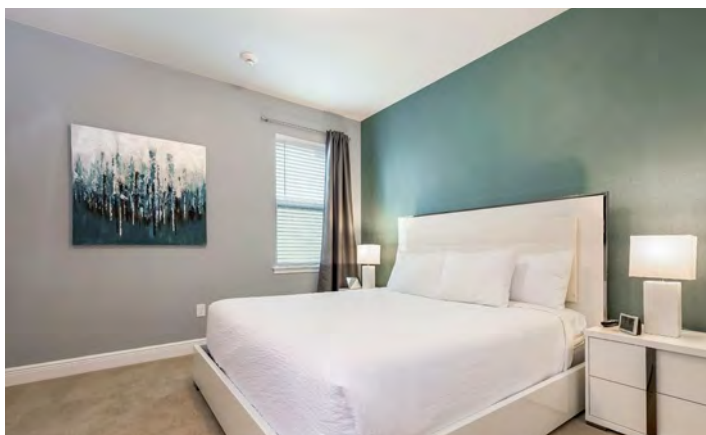


Home photos may not match the exact accommodation you receive upon check-in. Room/bed type depends on availability at check-in.

****Subject to change without prior notice.**

9-Bedroom Home **ELITE** Westside

- Home theaters and/or game rooms
- Larger pools and backyards



9-BEDROOM HOME NEAR WATER PARK



Our 9-Bedroom Home Near Water Park is decorated and equipped with all your vacation needs. This 9-bedroom home sleeps up to 18 people and is 4,600 sq. ft. minimum. These homes near the water park are located close to our premier resort amenities, including clubhouse, restaurants and tennis, basketball, and volleyball courts. Walking distance from Encore Resort Clubhouse (Water Park). A resort fee of \$40.00** per night applies.

KEY FEATURES:

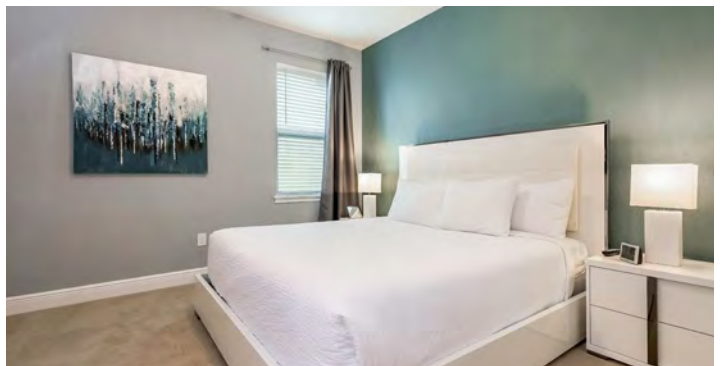
- 9 Bedrooms
- 8 Bathrooms *(welcome amenities included)*
- Number of Floors: 2
- Oversized Dining Area
- Lounge with Sleeper Sofa
- Fully Equipped Kitchen *(Microwave, Coffee/Tea Maker, Oven, Stove, Fridge, Toaster, Dishwasher, Cups/Glassware, Cookware, Cutlery, Kitchen welcome supplies)*
- Grill
- Private Pool
- Washer/Dryer
- TV in every bedroom
- Telephone *(with Unlimited Local and Toll-Free Phone Calls)*
- Wireless Internet Connection
- Iron & Iron Board
- Private Safe
- Hairdryer
- Alarm Clock
- Air Conditioning
- Smoke Detectors / Non-smoking
- Pets allowed* *(restrictions apply)*
- Daily Housekeeping Service*
- Private Garage / Driveway Parking
- Full Cleaning Service*
- Equipment Rentals* *(twin rollaway bed, pack n' play, propane tank, etc)*

*Additional fees apply



9-Bedroom Home **ELITE** Near Water Park

- Home theaters and/or game rooms
- Larger pools and backyards
- Walking distance from Encore Resort Clubhouse and Water Park



Home photos may not match the exact accommodation you receive upon check-in. Room/bed type depends on availability at check-in.

**Subject to change without prior notice.

10-BEDROOM HOME EASTSIDE

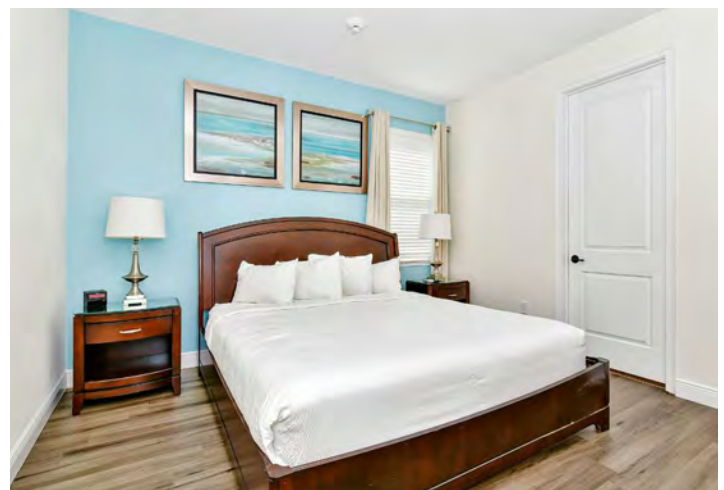


Our 10-Bedroom Home Eastside is decorated and equipped with all your vacation needs. This 10-bedroom home sleeps up to 20 people and is 5,100 sq. ft. minimum. Eastside homes are tucked away in a quiet corner of the resort with access to a children's playground, basketball courts and other amenities. A resort fee of \$40.00** per night applies.

KEY FEATURES:

- 10 Bedrooms
- 10 Bathrooms *(welcome amenities included)*
- Number of Floors: 2
- Oversized Dining Area
- Lounge with Sleeper Sofa
- Fully Equipped Kitchen *(Microwave, Coffee/Tea Maker, Oven, Stove, Fridge, Toaster, Dishwasher, Cups/Glassware, Cookware, Cutlery, Kitchen welcome supplies)*
- Grill
- Private Pool
- Washer/Dryer
- TV in every bedroom
- Telephone *(with Unlimited Local and Toll-Free Phone Calls)*
- Wireless Internet Connection
- Iron & Iron Board
- Private Safe
- Hairdryer
- Alarm Clock
- Air Conditioning
- Smoke Detectors / Non-smoking
- Pets allowed* *(restrictions apply)*
- Daily Housekeeping Service*
- Private Garage / Driveway Parking
- Full Cleaning Service*
- Equipment Rentals* *(twin rollaway bed, pack n' play, propane tank, etc)*

*Additional fees apply



Home photos may not match the exact accommodation you receive upon check-in. Room/bed type depends on availability at check-in.

**Subject to change without prior notice.

10-BEDROOM HOME WESTSIDE

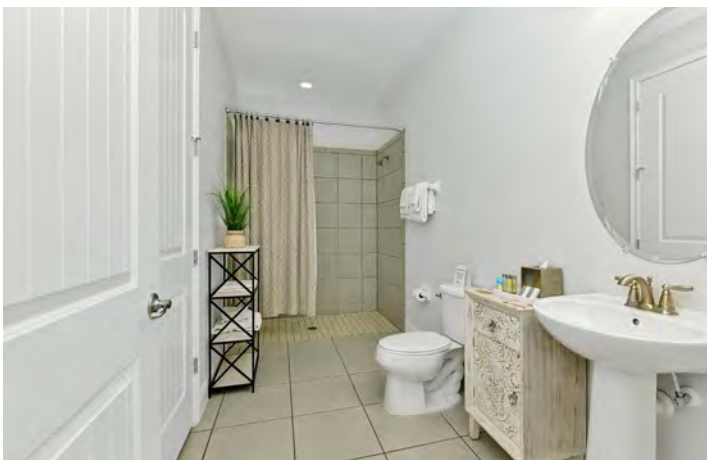


Our 10-Bedroom Home Westside is decorated and equipped with all your vacation needs. This 10-bedroom home sleeps up to 20 people and is 4,700 sq. ft. minimum. Westside homes are located near our premier resort amenities, including clubhouse, restaurants and tennis, basketball, and volleyball courts. A resort fee of \$40.00** per night applies.

KEY FEATURES:

- 10 Bedrooms
- 10 Bathrooms *(welcome amenities included)*
- Number of Floors: 2
- Oversized Dining Area
- Lounge with Sleeper Sofa
- Fully Equipped Kitchen *(Microwave, Coffee/Tea Maker, Oven, Stove, Fridge, Toaster, Dishwasher, Cups/Glassware, Cookware, Cutlery, Kitchen welcome supplies)*
- Grill
- Private Pool
- Washer/Dryer
- TV in every bedroom
- Telephone *(with Unlimited Local and Toll-Free Phone Calls)*
- Wireless Internet Connection
- Iron & Iron Board
- Private Safe
- Hairdryer
- Alarm Clock
- Air Conditioning
- Smoke Detectors / Non-smoking
- Pets allowed* *(restrictions apply)*
- Daily Housekeeping Service*
- Private Garage / Driveway Parking
- Full Cleaning Service*
- Equipment Rentals* *(twin rollaway bed, pack n' play, propane tank, etc)*

*Additional fees apply



Home photos may not match the exact accommodation you receive upon check-in. Room/bed type depends on availability at check-in.

**Subject to change without prior notice.

10-BEDROOM HOME NEAR WATER PARK



Our 10-Bedroom Home Near Water Park is decorated and equipped with all your vacation needs. This 10-bedroom home sleeps up to twenty people and is 4,700 sq. ft. minimum. These homes near the water park are located close to our premier resort amenities, including clubhouse, restaurants and tennis, basketball, and volleyball courts. Walking distance from Encore Resort Clubhouse (Water Park). A resort fee of \$40.00** per night applies.

KEY FEATURES:

- 10 Bedrooms
- 10 Bathrooms *(welcome amenities included)*
- Number of Floors: 2
- Oversized Dining Area
- Lounge with Sleeper Sofa
- Fully Equipped Kitchen *(Microwave, Coffee/Tea Maker, Oven, Stove, Fridge, Toaster, Dishwasher, Cups/Glassware, Cookware, Cutlery, Kitchen welcome supplies)*
- Grill
- Private Pool
- Washer/Dryer
- TV in every bedroom
- Telephone *(with Unlimited Local and Toll-Free Phone Calls)*
- Wireless Internet Connection
- Iron & Iron Board
- Private Safe
- Hairdryer
- Alarm Clock
- Air Conditioning
- Smoke Detectors / Non-smoking
- Pets allowed* *(restrictions apply)*
- Daily Housekeeping Service*
- Private Garage / Driveway Parking
- Full Cleaning Service*
- Equipment Rentals* *(twin rollaway bed, pack n' play, propane tank, etc)*

**Additional fees apply*



10-Bedroom Home Additional Feature

- Walking distance from Encore Resort Clubhouse and Water Park



Home photos may not match the exact accommodation you receive upon check-in. Room/bed type depends on availability at check-in.

****Subject to change without prior notice.**

11-BEDROOM HOME WESTSIDE



Our 11-Bedroom Home Westside is decorated and equipped with all your vacation needs. This 11-bedroom home sleeps up to 22 people and is 5,400 sq. ft. minimum. Westside homes are located near our premier resort amenities, including clubhouse, restaurants and tennis, basketball, and volleyball courts. A resort fee of \$40.00** per night applies.

KEY FEATURES:

- 11 Bedrooms
- 10 Bathrooms *(welcome amenities included)*
- Number of Floors: 2
- Oversized Dining Area
- Lounge with Sleeper Sofa
- Fully Equipped Kitchen *(Microwave, Coffee/Tea Maker, Oven, Stove, Fridge, Toaster, Dishwasher, Cups/Glassware, Cookware, Cutlery, Kitchen welcome supplies)*
- Grill
- Private Pool
- Washer/Dryer
- TV in every bedroom
- Telephone *(with Unlimited Local and Toll-Free Phone Calls)*
- Wireless Internet Connection
- Iron & Iron Board
- Private Safe
- Hairdryer
- Alarm Clock
- Air Conditioning
- Smoke Detectors / Non-smoking
- Pets allowed* *(restrictions apply)*
- Daily Housekeeping Service*
- Private Garage / Driveway Parking
- Full Cleaning Service*
- Equipment Rentals* *(twin rollaway bed, pack n' play, propane tank, etc)*

**Additional fees apply*



Home photos may not match the exact accommodation you receive upon check-in. Room/bed type depends on availability at check-in.

****Subject to change without prior notice.**

11-BEDROOM HOME ELITE NEAR WATER PARK



Our 11-Bedroom Home Elite Near Water Park is decorated and equipped with all your vacation needs. This 11-bedroom home sleeps up to 22 people and is 5,400 sq. ft. minimum. These homes near the water park are located close to our premier resort amenities, including clubhouse, restaurants and tennis, basketball, and volleyball courts. A resort fee of \$40.00** per night applies.

KEY FEATURES:

- 11 Bedrooms
 - 10 Bathrooms *(welcome amenities included)*
 - Number of Floors: 2
 - Oversized Dining Area
 - Lounge with Sleeper Sofa
 - Fully Equipped Kitchen *(Microwave, Coffee/Tea Maker, Oven, Stove, Fridge, Toaster, Dishwasher, Cups/Glassware, Cookware, Cutlery, Kitchen welcome supplies)*
 - Grill
 - Private Pool
 - Washer/Dryer
 - TV in every bedroom
 - Telephone *(with Unlimited Local and Toll-Free Phone Calls)*
 - Wireless Internet Connection
 - Iron & Iron Board
 - Private Safe
 - Hairdryer
 - Alarm Clock
 - Air Conditioning
 - Smoke Detectors / Non-smoking
 - Pets allowed* *(restrictions apply)*
 - Daily Housekeeping Service*
 - Private Garage / Driveway Parking
 - Full Cleaning Service*
 - Equipment Rentals* *(twin rollaway bed, pack n' play, propane tank, etc)*
- *Additional fees apply*



11-Bedroom Home Additional Features

- Home theaters and/or game rooms
- Larger pools and backyards
- Walking distance from Encore Resort Clubhouse and Water Park



Home photos may not match the exact accommodation you receive upon check-in. Room/bed type depends on availability at check-in.

**Subject to change without prior notice.

12-BEDROOM HOME ELITE WESTSIDE



Our 12-Bedroom Home Elite Westside is decorated and equipped with all your vacation needs. This 12-bedroom home sleeps up to 24 people and is 6,400 sq. ft. minimum. Westside homes are located near our premier resort amenities, including clubhouse, restaurants and tennis, basketball, and volleyball courts. The Elite Home theaters and/or game rooms, larger pools and backyards. A resort fee of \$40.00** per night applies.

KEY FEATURES:

- 12 Bedrooms
- 12 Bathrooms *(welcome amenities included)*
- Number of Floors: 2
- Oversized Dining Area
- Lounge with Sleeper Sofa
- Fully Equipped Kitchen *(Microwave, Coffee/Tea Maker, Oven, Stove, Fridge, Toaster, Dishwasher, Cups/Glassware, Cookware, Cutlery, Kitchen welcome supplies)*
- Grill
- Private Pool
- Washer/Dryer
- TV in every bedroom
- Telephone *(with Unlimited Local and Toll-Free Phone Calls)*
- Wireless Internet Connection
- Iron & Iron Board
- Private Safe
- Hairdryer
- Alarm Clock
- Air Conditioning
- Smoke Detectors / Non-smoking
- Pets allowed* *(restrictions apply)*
- Daily Housekeeping Service*
- Private Garage / Driveway Parking
- Full Cleaning Service*
- Equipment Rentals* *(twin rollaway bed, pack n' play, propane tank, etc)*

**Additional fees apply*



12-Bedroom Home Additional Features

- Home theaters and/or game rooms
- Larger pools and backyards



Home photos may not match the exact accommodation you receive upon check-in. Room/bed type depends on availability at check-in.

****Subject to change without prior notice.**

13-BEDROOM HOME ELITE NEAR WATER PARK



Our 13-Bedroom Home Elite Near Water Park is decorated and equipped with all your vacation needs. This thirteen-bedroom home sleeps up to 26 people and is 6,400 sq. ft. minimum. These homes near the water park are located close to our premier resort amenities, including clubhouse, restaurants and tennis, basketball, and volleyball courts. A resort fee of \$40.00** per night applies.

KEY FEATURES:

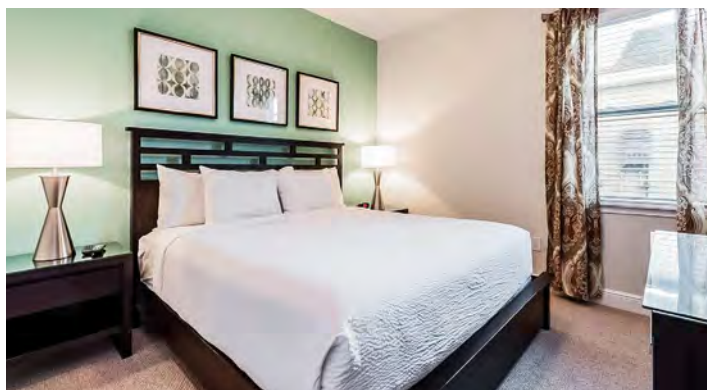
- 13 Bedrooms
- 12 Bathrooms *(welcome amenities included)*
- Number of Floors: 2
- Oversized Dining Area
- Lounge with Sleeper Sofa
- Fully Equipped Kitchen *(Microwave, Coffee/Tea Maker, Oven, Stove, Fridge, Toaster, Dishwasher, Cups/Glassware, Cookware, Cutlery, Kitchen welcome supplies)*
- Grill
- Private Pool
- Washer/Dryer
- TV in every bedroom
- Telephone *(with Unlimited Local and Toll-Free Phone Calls)*
- Wireless Internet Connection
- Iron & Iron Board
- Private Safe
- Hairdryer
- Alarm Clock
- Air Conditioning
- Smoke Detectors / Non-smoking
- Pets allowed* *(restrictions apply)*
- Daily Housekeeping Service*
- Private Garage / Driveway Parking
- Full Cleaning Service*
- Equipment Rentals* *(twin rollaway bed, pack n' play, propane tank, etc)*

**Additional fees apply*



13-Bedroom Home Additional Features

- Home theaters and/or game rooms
- Larger pools and backyards
- Walking distance from Encore Resort Clubhouse and Water Park



Home photos may not match the exact accommodation you receive upon check-in. Room/bed type depends on availability at check-in.

****Subject to change without prior notice.**